

54 SERIES **UL - 836**

"ULTRA" BRAND HEAVY DUTY FINE PITCH MULTI COIL ELECTRO MAGNETIC CHUCK

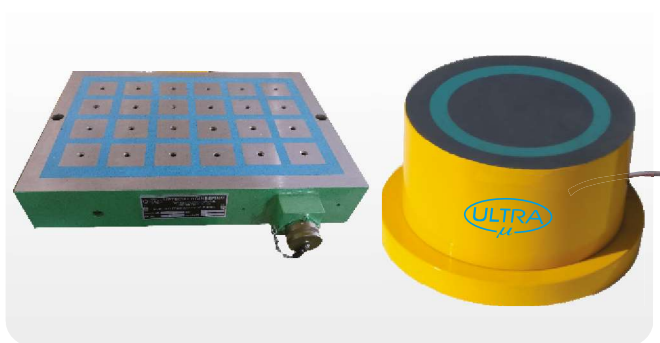


- Work holding device for surface grinding machines.
- Each pole is having separate coil, so/hence very strong & even magnetic flux is generated.
- Accuracy as per IS : 8710 - 1978.
- **Magnetic pull is 30-50% more than IS specification.**
- **Fine Pitch 6.5 mm** makes it suitable to hold thin & small jobs.
- Mag - D - Mag with variable control unit allows to neutralize the residual magnetism precisely, using a microprocessor based control circuitry.
- Variable supply to vary power which helps in alignment & removing of warpages of thin jobs.
- Chuck is tested for Slipping force, Waterproof test, Temperature rise test, electrical & demagnetizing tests.
- **ALSO AVAILABLE IN LONGITUDINAL POLES.**

Code No.	Size (mm)	Pole Gap (mm)
UL - 83601	450 L x 150 W x 95 H	6.5 (5+1.5) mm
UL - 83602	500 L x 200 W x 95 H	6.5 (5+1.5) mm
UL - 83603	600 L x 200 W x 95 H	6.5 (5+1.5) mm
UL - 83604	600 L x 250 W x 95 H	6.5 (5+1.5) mm
UL - 83605	750 L x 250 W x 95 H	6.5 (5+1.5) mm
UL - 83606	900 L x 250 W x 95 H	6.5 (5+1.5) mm
UL - 83607	600 L x 300 W x 95 H	6.5 (5+1.5) mm
UL - 83608	750 L x 300 W x 95 H	6.5 (5+1.5) mm
UL - 83609	900 L x 300 W x 95 H	6.5 (5+1.5) mm
UL - 83610	1000 L x 250 W x 100 H	6.5 (5+1.5) mm
UL - 83611	1000 L x 300 W x 100 H	6.5 (5+1.5) mm
UL - 83612	1500 L x 250 W x 100 H	6.5 (5+1.5) mm
UL - 83613	1500 L x 300 W x 100 H	6.5 (5+1.5) mm
UL - 83614	800 L x 400 W x 100 H	6.5 (5+1.5) mm
UL - 83615	1200 L x 400 W x 100 H	6.5 (5+1.5) mm
UL - 83616	1200 L x 400 W x 100 H	6.5 (5+1.5) mm

55 SERIES **UL - 839**

"ULTRA" BRAND MODULAR ELECTROPERMANENT MAGNET



- Work holding device for conventional & CNC milling m/c, and drilling operations.
- **COLD DEVICE** as it doesn't require power continuously except for short period of activation & deactivation.
- Suitable for light milling i.e. 1-2 mm depth of cut at recommended speed & feed.
- Maximum material removal is possible.
- Economical for operation & maintenance.
- No accidents due to power failure.

Product is designed as per customer requirement.